

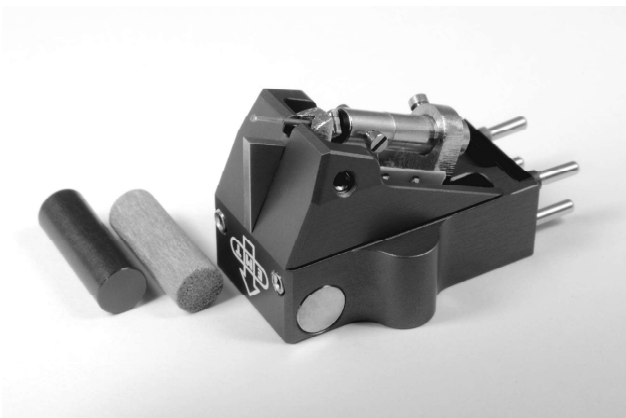
EMT Cartridges

Hi-Fi-Line



EMT was founded in 1940 and became famous by manufacturing professional turntables in Lahr, Germany. In 1965, EMT launched the famous MC cartridge TSD 15, which was produced in many ten-thousand pieces and used in broadcast studios all over the world.

In 1974, the portfolio was widened for hi-fi listeners and in 2006, the JSD series was introduced. Since 2014, all EMT cartridges are designed and manufactured in Switzerland.



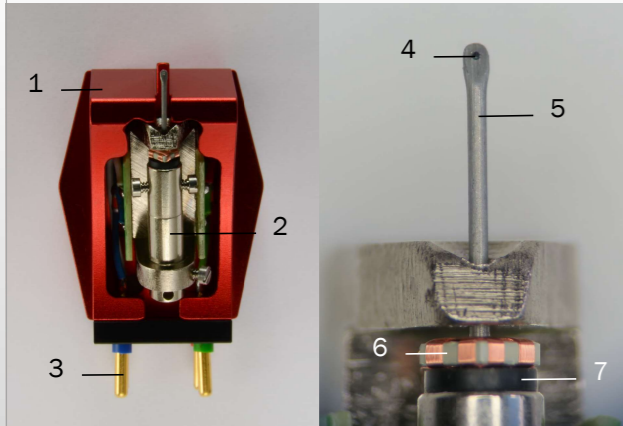
We at EMT are enthusiastic about music reproduction and we feel sure that analogue technology harmonizes best with the nature of music.

All pickups are built piece by piece in fine craftsmanship by our well educated team of watchmakers and assembling employees. Even if we are familiar with most modern designing and manufacturing equipment, personal experience in listening and manual skills are the real reason making our cartridges so precious and musical.

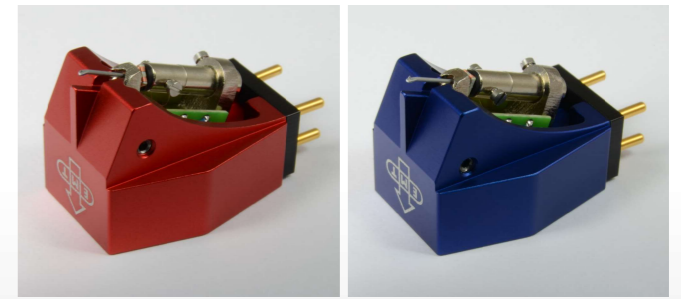
HiFi Series

EMT started building cartridges in 1959 and launched the most famous TSD 15 in 1965. The HSD 006 (Stereo) and HMD 025 (Mono) cartridges feature the traditional EMT moving-coil generator, which has proven itself over decades in broadcast studios all over the world.

Modern body design makes it possible to bring professional EMT technology to your personal hi-fi system, and lets you enjoy the intoxicating musicality of this outstanding transducer.



- 1 Cartridge body, made of aluminium
- 2 Magnet, nickel coated
- 3 Pin-connection, golden coated
- 4 Diamond (SFL / SPH 25)
- 5 Aluminium cantilever
- 6 Transducer unit
- 7 Suspension and damping element



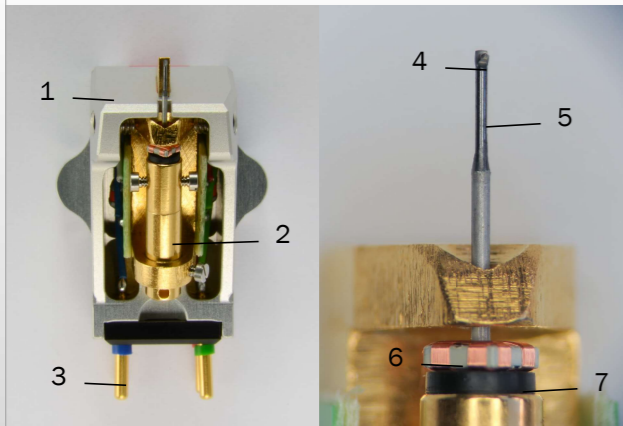
Specification

| | HSD 006 | HMD 025 |
|-------------------------|-----------------|----------------|
| Diamond: | Super-Fine-Line | Spherical 25µm |
| Transducer: | MC Stereo | MC Mono |
| Weight: | 12g | |
| Tracking force: | 2.4g | |
| Output voltage @ 5cm/s: | 1.05mV | |
| Compliance: | 12µm/mN | |
| Recommended load: | 200 - 300Ω | |

JSD Classic Series

In 2006, professional broadcast manufacturer EMT introduced the JSD series, developed specifically for real music lovers. The MC-cartridges feature a diamond in either multi-radius (5) or Super-Fine-Line (6) shape.

The JSD Classic Line fascinates with high resolution tracking and holistic musical performance. The high polish quality of the diamond reduces tracking noise and the dynamic transducer involves the listener in nothing else but music.



- 1 Cartridge body, made of aluminium
- 2 Magnet, golden coated
- 3 Pin-connection, golden coated
- 4 Diamond, high polish grade
- 5 Boron cantilever
- 6 Stereo transducer unit
- 7 Suspension and damping element



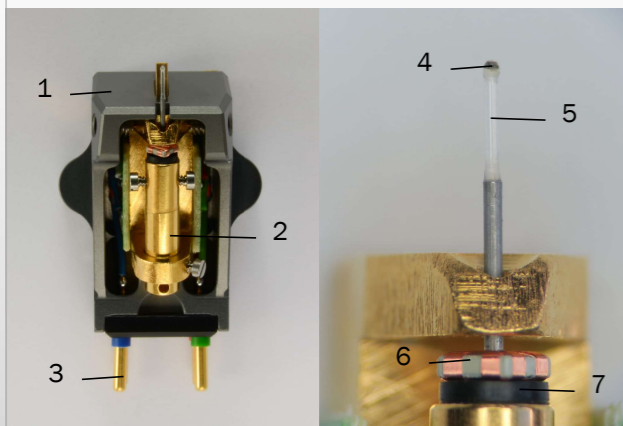
Specification

| | JSD 5 | JSD 6 |
|-------------------------|------------|--------------------|
| Diamond: | MR HP | Super-Fine-Line HP |
| Transducer: | MC Stereo | |
| Weight: | 10g | |
| Tracking force: | 2.4g | |
| Output voltage @ 5cm/s: | 1.05mV | |
| Compliance: | 12µm/mN | |
| Recommended load: | 200 - 300Ω | |

JSD Reference Series

All EMT reference-line cartridges feature a multi-radius diamond on sapphire cantilever. Our unique assembling technology makes it possible to tune the individual sound properties of this high-resolution transducer unit to maximum musicality.

The cartridge body is manufactured from an individual material combination for each model. As a special highlight, the JSD VM allows the user to tune the resonance behaviour according to tonearm specifications and personal preference.

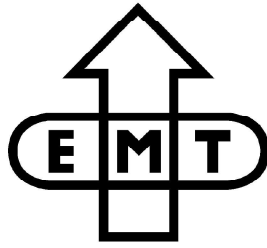


- 1 Cartridge body, specifically designed and manufactured for each model
- 2 Magnet, golden coated
- 3 Pin-connection, golden coated
- 4 Multi-radius diamond, high polish grade
- 5 Sapphire cantilever
- 6 Stereo transducer unit
- 7 Suspension and damping element



Specification

| | JSD Pure Black / Lime | JSD VM | JSD Platinum |
|-------------------------|---|------------------------------------|--------------------------------|
| Body: | sandwich body black or lime anodized | variable mass graphite anodized | high density rhodium plated |
| Weight: | 11g | 10-12g | 18g |
| Transducer: | MC Stereo | | |
| Tracking force: | 2.4g | | |
| Output voltage @ 5cm/s: | 1.05mV | | |
| Compliance: | 12µm/mN | | |
| Recommended load: | 200 - 300Ω | | |



EMT Step Up Transformer

STX 5/10

The EMT MC step-up transformer has been carefully designed and manufactured in Switzerland to satisfy highest demands for musicality. It is perfectly matched to EMT cartridges as a reference and offers a second output for cartridges with lower output level.

The toroidal winding technology with purest silver wire and advanced magnetic materials brings this very traditional technology to a new level of ultra-low noise and high resolution.



| | |
|-----------------|--------------------------------------|
| Gain: | +14 dB (1:5) +20 dB (1:10) |
| Wire: | 99,99% Silver |
| Core: | very low loss alloy |
| Ground options: | Input Cold Floating Center Tap |
| Load options: | EMT Open |
| Size: | 200x160x80mm |