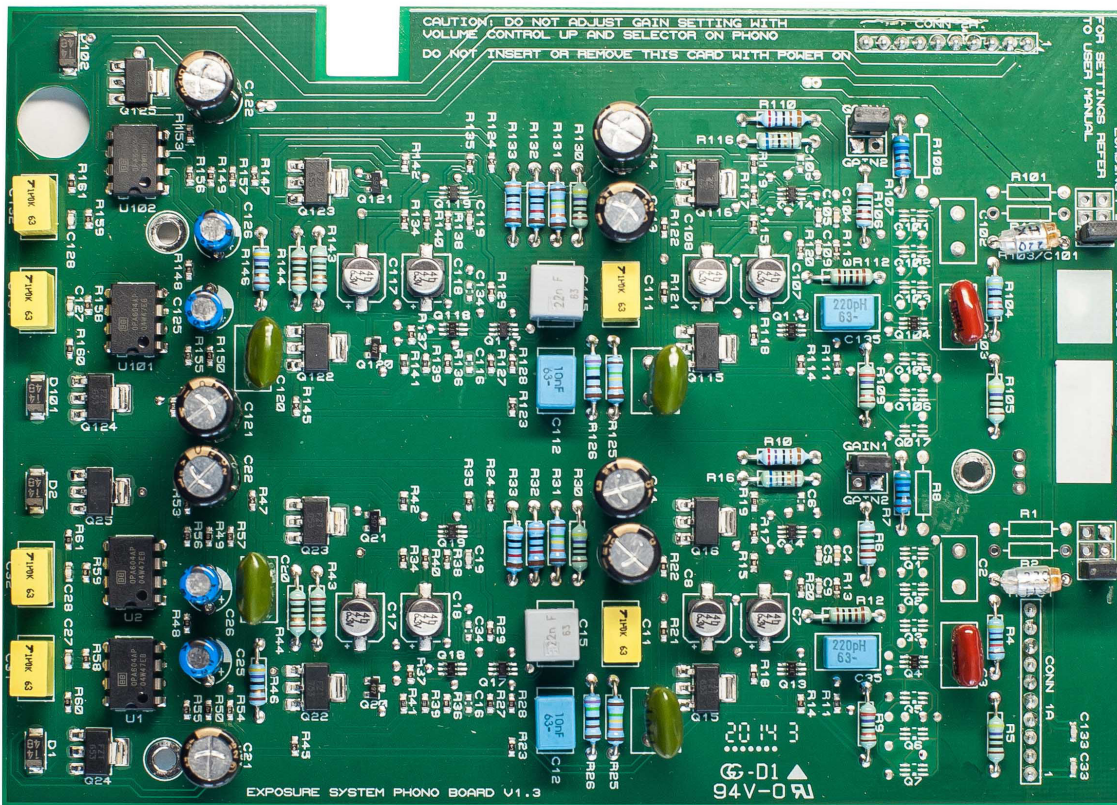


# The Art of Music Reproduction



## 3010S2 & 5010 MM Board

### Specifications

Sensitivity and Signal to Noise, ref 1kHz and 250mV Out :  
 GAIN 1 jumper fitted : 2.5mV, >78dB S/N (default setting)  
 No jumper fitted : 5mV, >79dB S/N

#### Loading :

47K Ohms

#### Or With Loading 1 Fitted :

Additional 220pF in parallel with the cartridge (default)

### Features

- All discrete transistor audio stages
- High quality parts used throughout
- Tight tolerance parts used for accurate equalisation
- Low noise power supply regulators
- DC coupled input stage

#### Can be fitted to :

- 3010 Integrated Amplifier
- 3010S Integrated Amplifier
- 3010S2 Integrated Amplifier
- 3010S2 Pre-Amplifier
- 3010S2D Integrated Amplifier
- 3010S2D Pre-Amplifier
- 5010 Pre-Amplifier